

## Neolithic and Bronze Age Pottery

Pottery was introduced during the Neolithic Period (c.4000-2000BC) as humans became settled and farming developed. In the Bronze Age (c.2000-700BC) the pottery displayed the general developments in society, particularly in religious beliefs and continental contacts.

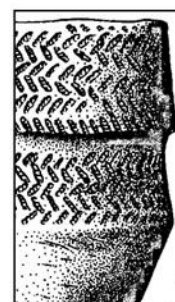
This pottery was coarse, coil built and fired in a bonfire at 600-700 degrees Centigrade.



**Neolithic sherd**  
from  
Hallam Fields,  
Birstall,  
Leicestershire.



**Bronze Age Collared Urn**  
from  
Cossington,  
Leicestershire.



Herringbone cord  
decoration  
(After Allen 2008)

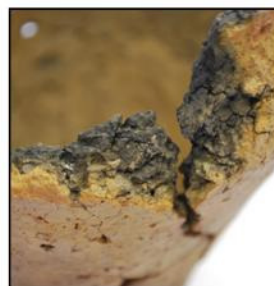
### Part of a Bronze Age vessel from Hallam Fields. Finger nail decoration



The sherd  
and an  
illustration  
of the  
vessel it  
came from



After Marsden & Cooper (2010)



### Bronze Age Urns



Cremation Urn  
from Eye  
Kettleby



Neolithic/Bronze  
Age Urn from  
Smeeton Westerby

- References:** - 1. Allen C (2008) The Bronze Age Pottery in Thomas J, *Monument, Memory & Myth*, ULAS p.32 fig 8, & p.35.  
2.. Laing L (2003) *Pottery in Britain*, Geenlight Publishing.  
3. Marsden P & Cooper L (2010) Pre-Iron Age Activity in Speed G, The Excavation of an Enclosed Iron Age Settlement at Hallam Fields, Birstall, Leicestershire, *TLAHS* Vol. 84 p.32-5 fig 5, (7) & p.36.



Pottery from the Leicestershire Museums Collection. Photographed and compiled by Andy Kirkland